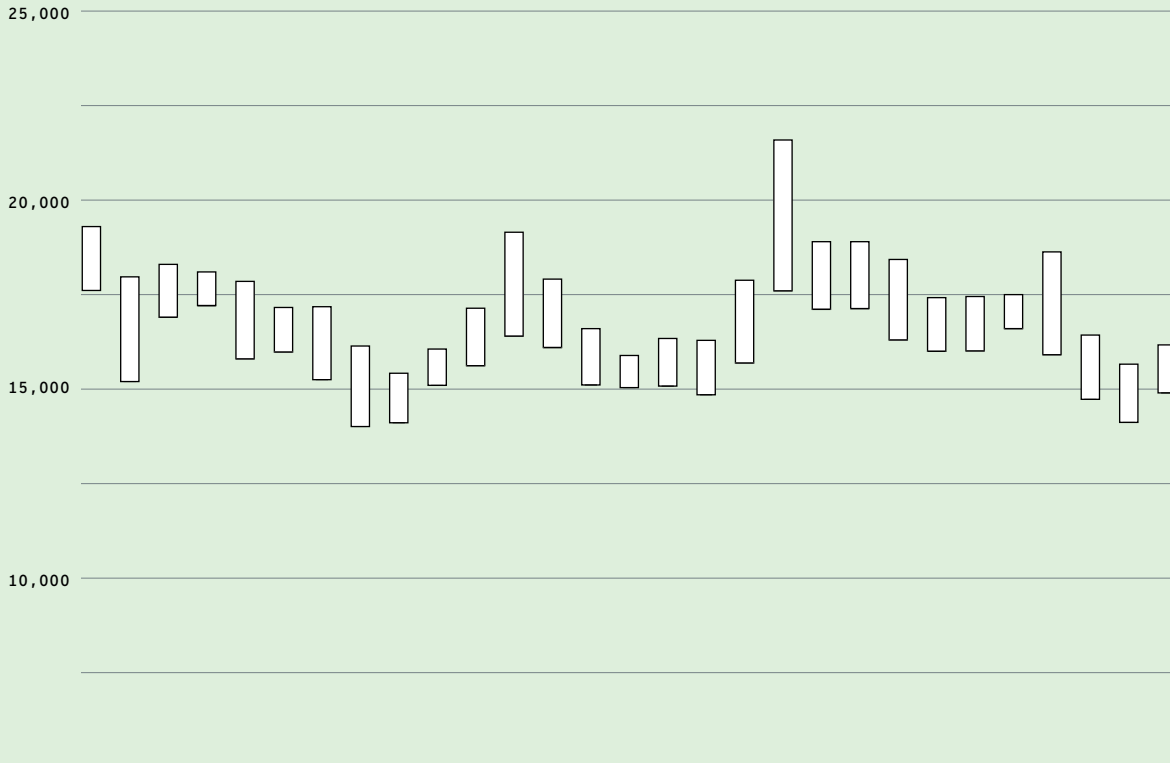
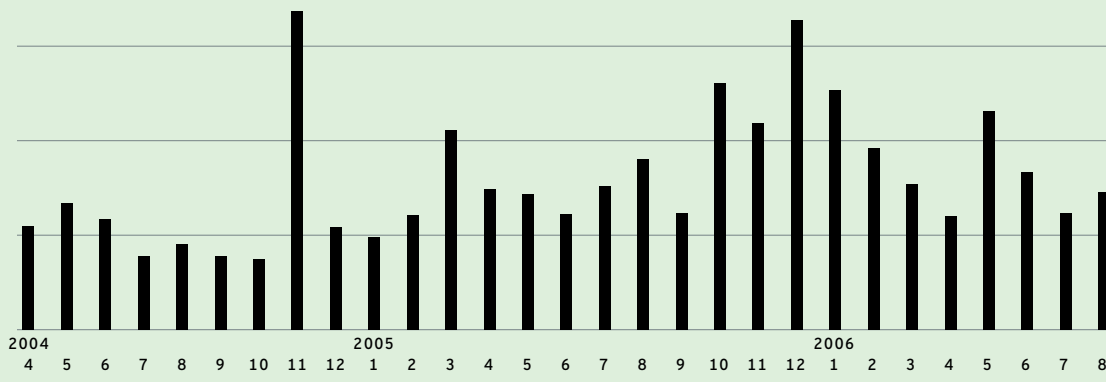


# Stock Price

Stock Price  
(Yen)



Trading Volume  
(Thousands of shares)



# NTV Group

## Television Broadcasting

### Program Planning and Production

NTV Eizo Center Corporation\*  
NTV Video Corporation\*  
NTV Enterprises Co., LTD.\*  
Nippon Television Art Corp.\*  
NTV America Company\*  
NTV International Corporation\*  
Nippon Television Network Europe B.V.  
NTV Personnel Center Corp.  
J.M.P Co., Ltd.  
Nishinohon Eizo Corporation  
Nagasaki Vision Corp.  
Kagoshima Vision Corporation  
Kanazawa Eizo Center Corporation  
Nagano Visual Center Corporation  
Cosmo Space Co., Ltd.  
Promedia Co., Ltd.

### Broadcasting Service

BS Nippon Corporation  
CS Nippon Corporation  
Yomiuri Telecasting Corporation  
Fukuoka Broadcasting Corporation

## Culture-Related Business

### Copyright Management

Nippon Television Music Corporation\*  
Rights Inn Corporation

### Audio and Visual Content Planning, Production and Sales

VAP Inc.\*  
VAP Music Publishing Inc.

### Art Exhibition Planning

Mamma Aiuto Inc.

## Other Business

### Novelty Product Sales

NTV Service Inc.\*

### Facility Management

Nippon Television Work 24 Corporation\*

### Professional Football Team Management

Nippon Television Football Club Co., Ltd.\*  
(TOKYO VERDY 1969)

### Internet and Broadband

Forecast Communications Inc.\*  
NTV IT Produce Corporation  
B-BAT Inc.  
CYBIRD Mobilecasting Inc.

### Art Exhibition Goods Sales

Art Yomiuri Co., Ltd.

### Other

SOUND INN STUDIOS INC.  
Shiodome Urban Energy Corporation  
AsiaOne Corporation  
RF Radio Nippon Co., Ltd.

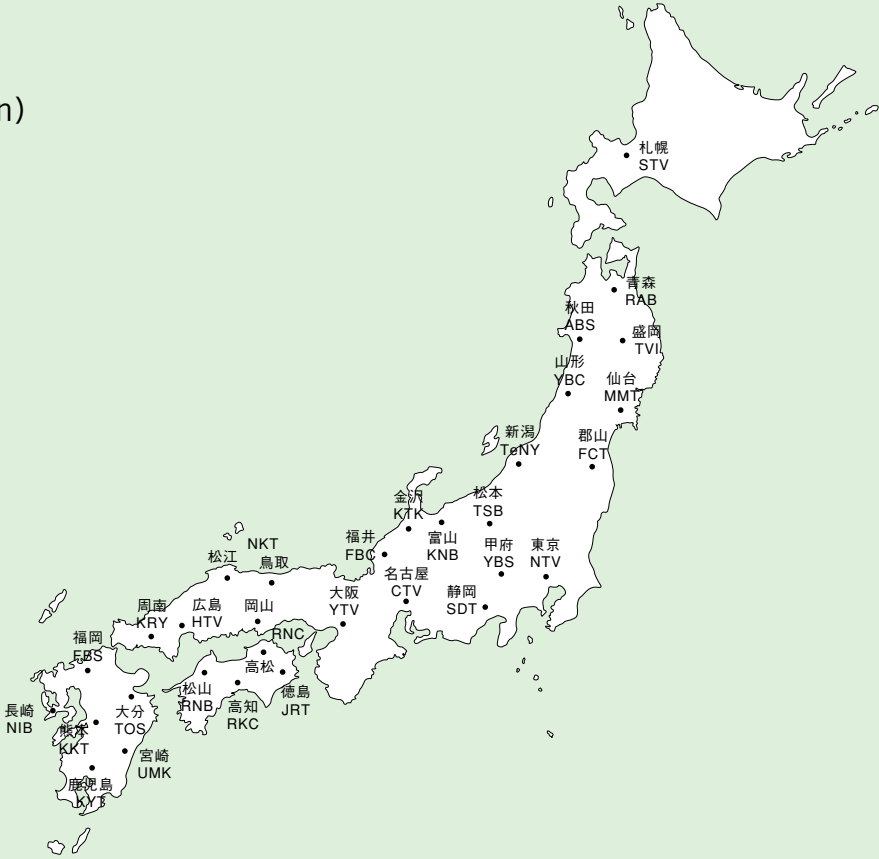
\*Consolidated subsidiary



Complete Transition to  
Digital Broadcasting by 2011

# NTV Global Network

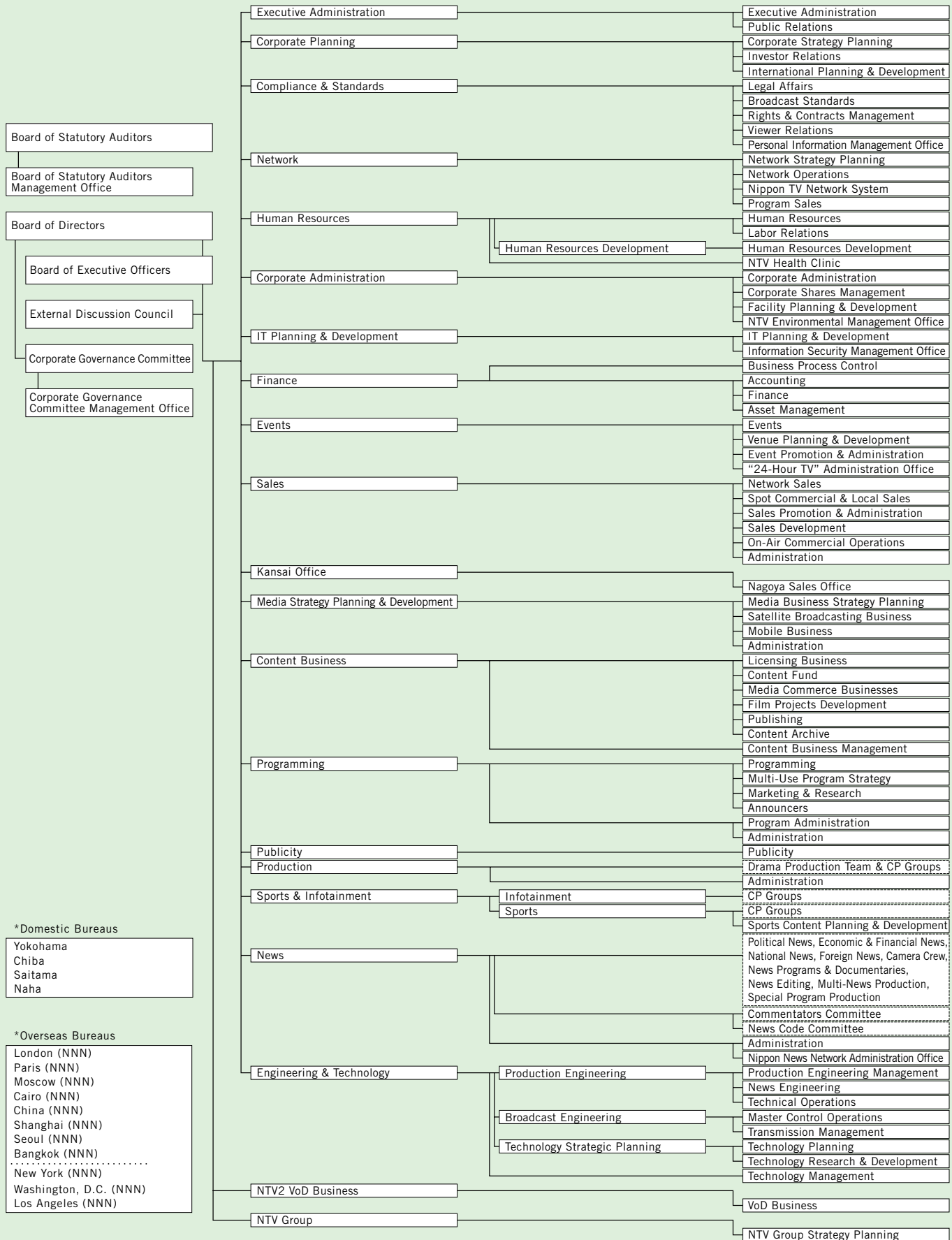
## NTV Affiliates (Japan)



## NTV/NNN Overseas News Bureaus



# NTV Corporation Organization Chart (As of November 1, 2006)



**\*Domestic Bureaus**

- Yokohama
- Chiba
- Saitama
- Naha

**\*Overseas Bureaus**

- London (NNN)
- Paris (NNN)
- Moscow (NNN)
- Cairo (NNN)
- China (NNN)
- Shanghai (NNN)
- Seoul (NNN)
- Bangkok (NNN)
- .....
- New York (NNN)
- Washington, D.C. (NNN)
- Los Angeles (NNN)

## Corporate Data (As of July 1, 2006)

### Head Office:

Nippon Television Network Corporation  
1-6-1 Higashi Shimbashi, Minato-ku,  
Tokyo 105-7444, Japan  
Tel: 81-3-6215-1111

### Date of Establishment:

October 28, 1952

### Start of Operations:

August 28, 1953

### Number of Employees: (As of March 31, 2006)

1,116 (Non-consolidated)

### Common Stock:

Authorized 100,000,000 Shares  
Issued 25,364,548 Shares

### Paid-in Capital:

¥18,576 Million

### Stock Exchange Listing:

Tokyo

### Transfer Agent and Registrar:

The Chuo Mitsui Trust and Banking Company, Limited  
3-33-1 Shiba, Minato-ku, Tokyo 105-0014, Japan

## Directors (As of July 1, 2006)

### BOARD OF DIRECTORS AND STATUTORY AUDITORS

#### Representative Director, Chairman

Seiichiro Ujiie

#### Representative Director, Adviser

Kohei Manabe

#### Representative Director

Shintaro Kubo

#### Board Directors

Noritada Hosokawa

Katsuhiko Masukata

Yoshihiro Yamane

Yoichi Shimada

Tadao Kurosaki

Takeshi Sakai

Toru Shoriki

Tsuneo Watanabe\*

Gaishi Hiraiwa\*

Nobuo Yamaguchi\*

Hiroshi Maeda\*

Yoshifumi Akao\*

Seiji Tsutsumi\*

#### Standing Statutory Auditor

Kinya Yokoegawa

#### Statutory Auditors

Ryuzo Sejima\*\*

Tomonari Doi\*\*

Kenya Mizukami\*\*

### OPERATING OFFICERS

#### President

Shintaro Kubo\*

#### Executive Vice President

Noritada Hosokawa\*

#### Managing Officer

Katsuhiko Masukata\*

#### Operating Officers

Yoshihiro Yamane\*

Yoichi Shimada\*

Tadao Kurosaki\*

Takeshi Sakai\*

#### Senior Operating Officers

Kunisuke Hirabayashi

Masaki Matsumoto

Fumihiko Hirai

Hime Miura

Hiroshi Akimoto

#### Operating Officers

Yasuhiro Nose

Haruhisa Murokawa

Shinichi Tamura

Tsutomu Tabata

\* Concurrent Director

\* Outside directors pursuant to Article  
2.15 of the Corporation Law

\*\* Outside auditors pursuant to Article  
2.16 of the Corporation Law



NTV IR Site

<http://www.ntv.co.jp/english/>