

# Investor Information (As of March 31, 2007)

## Stock Exchange Listing

First Section of Tokyo Stock Exchange

## Stock Code

9404

## Common Stock

Authorized 100,000,000 shares

Issued 25,364,548 shares

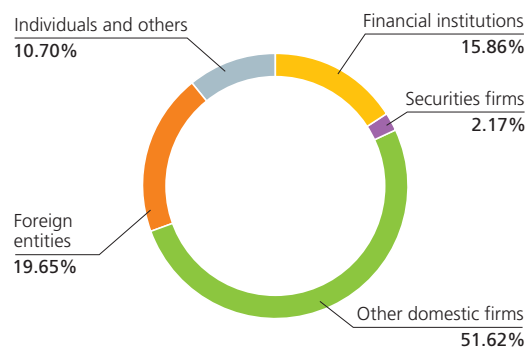
## Number of Shareholders

45,789

## Transfer Agent and Registrar

The Chuo Mitsui Trust and Banking Company, Limited  
3-33-1 Shiba, Minato-ku, Tokyo 105-0014, Japan

## Distribution of Shares

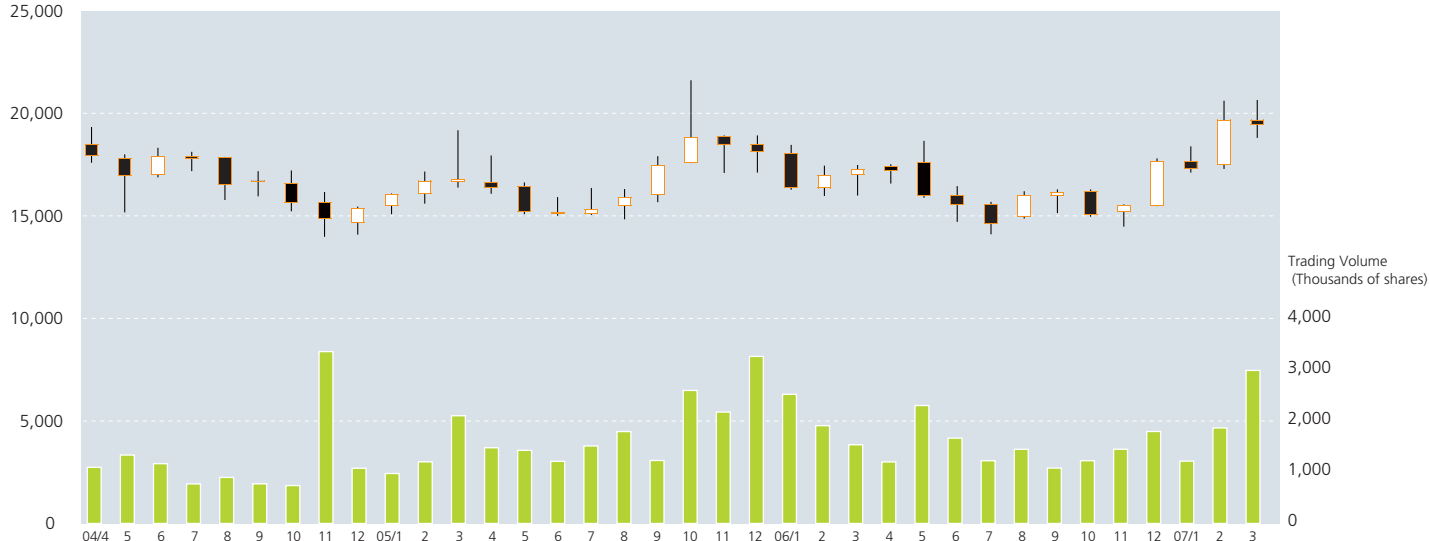


## Major Shareholders

	Number of shares held	Percentage of total shares issued (%)
The Yomiuri Shimbun Holdings	3,764,948	14.84
YOMIURI TELECASTING CORPORATION	1,574,836	6.20
The Yomiuri Shimbun	1,353,920	5.33
Teikyo University	897,270	3.53
Japan Trustee Services Bank, Ltd. (Trust Account)	790,300	3.11
NTT DoCoMo, Inc.	760,500	2.99
Morgan Stanley and Company International Ltd.	588,520	2.32
The Master Trust Bank of Japan, Ltd. (Trust Account)	567,920	2.23
NAGOYA BROADCASTING NETWORK	566,000	2.23
YOMIURI LAND. CO., LTD.	523,600	2.06

## Stock Price Range and Trading Volume (Tokyo Stock Exchange)

Stock price (Yen)  
25,000



This annual report was produced using waterless printing, a computer-to-plate process and soy ink. The paper used herein is certified by the Forest Stewardship Council (FSC) as being made from sustainably managed forests.

