

Investor Information (As of March 31, 2008)

Stock Exchange Listing

First Section of Tokyo Stock Exchange

Stock Code

9404

Common Stock

Authorized 100,000,000 shares

Issued 25,364,548 shares

Number of Shareholders

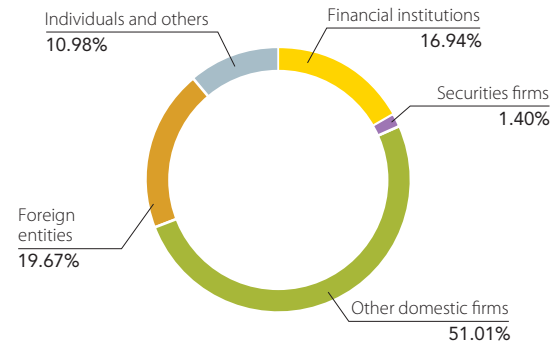
45,525

Transfer Agent and Registrar

The Chuo Mitsui Trust and Banking Company, Limited

3-33-1 Shiba, Minato-ku, Tokyo 105-0014, Japan

Distribution of Shares



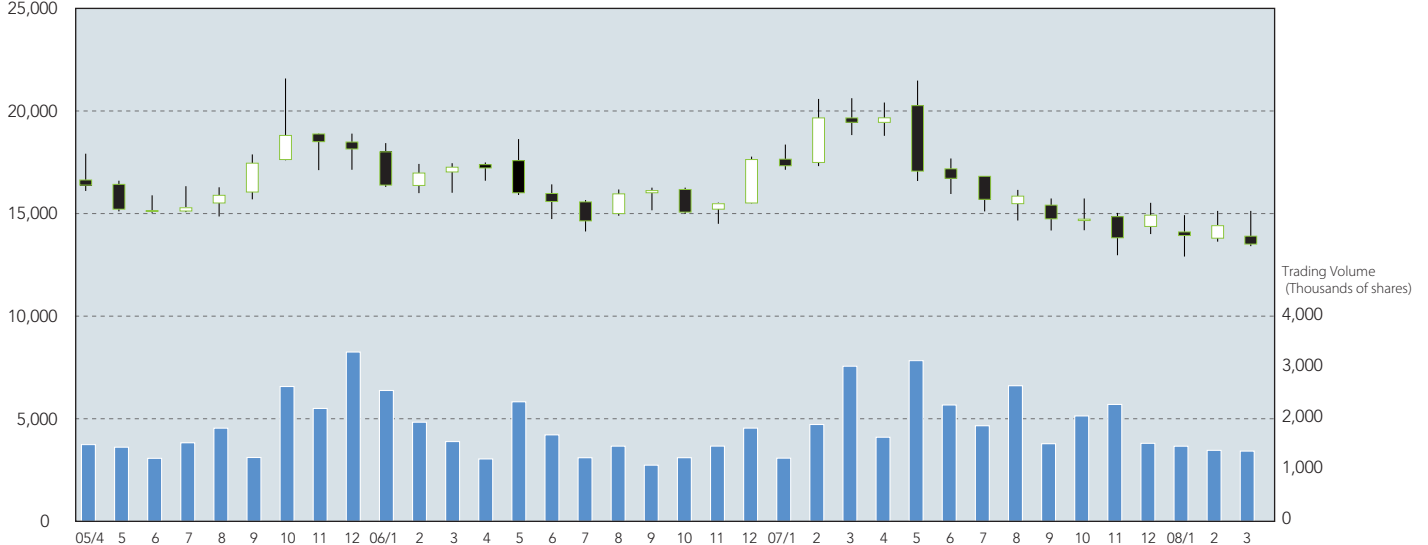
Major Shareholders

	Number of shares held	Percentage of total shares issued (%)
The Yomiuri Shimbun Holdings	3,764,948	14.84
YOMIURI TELECASTING CORPORATION	1,574,836	6.20
The Yomiuri Shimbun	1,363,920	5.37
Japan Trustee Services Bank, Ltd. (Trust Account)	990,260	3.90
Teikyo University	897,270	3.53
NTT DOCOMO, INC.	760,500	2.99
The Master Trust Bank of Japan, Ltd. (Trust Account)	743,790	2.93
CBNY-ORBIS SICAV	732,680	2.88
CBNY-ORBIS FUNDS	683,900	2.69
Recruit Co., Ltd.	645,460	2.54

Stock Price Range and Trading Volume (Tokyo Stock Exchange)

Stock price (Yen)

25,000



This annual report was produced using waterless printing, a computer-to-plate process and soy ink. The paper used herein is certified by the Forest Stewardship Council (FSC) as being made from sustainably managed forests.



<http://www.ntv.co.jp/english>

